

Mental Health Task Force

Mental Health Emergency Center Update



Pete Carlson, President, Behavioral Health

April 15, 2021

Joint Venture Emergency Mental Health Center

1. Mental Health Emergency Center SBAR (Situation, Background, Assessment, Recommendation)
2. Membership and Historical Perspective
3. Update to Current Status

Mental Health Emergency Center

Situation: Milwaukee County Behavioral Health Division (BHD) made the decision to close the inpatient psychiatric hospital and the psychiatric emergency room, the Psychiatric Crisis Services Center known as (PCS)

Background: After 70+ years of providing both psychiatric inpatient and emergency services, BHD made a strategic decision to close these financially troubled programs

Assessment: The four major health systems determined it made more sense from a provider shortage and financial point of view to form a joint venture and share the financial losses

Recommendation: Establish the Joint Venture

Members of the Milwaukee Health Care Partnership

4 Health Systems

- Ascension WI
- Advocate Aurora Health
- Children's Wisconsin
- Froedtert Health

5 Federally Qualified Health Centers (FQHCs)

- Gerald Ignace Indian Health Center
- Milwaukee Health Services, Inc.
- Outreach Community Health Centers
- Progressive Community Health Centers
- Sixteenth Street Community Health Centers

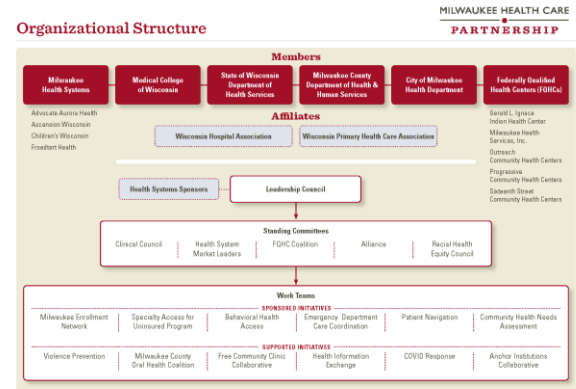
Government Health Agencies

- City of Milwaukee Health Department (MHD)
- Milwaukee County Department of Health & Human Services (DHHS)
- State of WI Department of Health Services (DHS)

Academic

- Medical College of Wisconsin

Affiliates: Wisconsin Hospital Association, Wisconsin Primary Health Care Association, Medical Society of Milwaukee County, Wisconsin Statewide Health Information Network (WISHIN), Free Community Clinic Collaborative (FC3), Others



MISSION: Established in 2002, the Milwaukee Health Care Partnership (MHP) is a public-private consortium dedicated to improving health care for low-income, underserved populations in Milwaukee County with the aim of improving health outcomes, advancing health equity and lowering the total cost of care.

MHCP Behavioral Health Leaders Committee

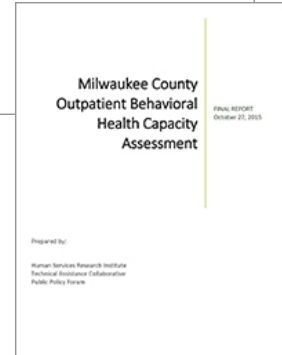
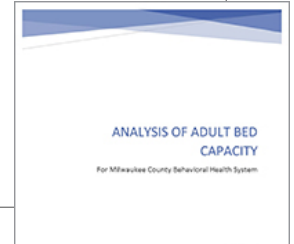
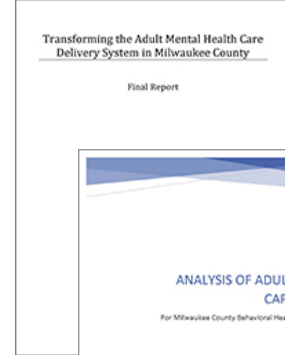
Launched in 2007 at request of County Executive Walker

- Established transfer agreements in 2008 eliminating wait-listing

Engaged in multi-stakeholder planning, networking and process improvement

- Milwaukee County BH Redesign Study * 2010
- IP Capacity Analysis * 2014
- OP Capacity Analysis * 2015
- **Psychiatric Crisis Redesign** *Fall 2018*

Essential forum for identifying issues, tracking changes, overseeing collaborative initiatives, monitoring outcomes







Mental Health Emergency Center (MHEC) Concept Comes to Life

- 24/7 ER / licensed as psychiatric hospital
- Serving voluntary and involuntary adults and children
- Providing intake, assessment, stabilization, emergency treatment, observation and transition care management services
- **Structured as a joint venture non-profit corporation**
 - Members: 4 health systems & Milwaukee County on behalf of BHD and Mental Health Board
 - \$18 million start up capital, estimated \$12 million annual operating loss to be under written w/ Milwaukee County covering 50% and health systems assuming 50% of capital and operating expense.
- **Advocate Aurora Health will operate the facility under Management Services Agreement (MSA)**
- **Projected opening - Q2 CY2022**

Key Drivers for this Unique Collaborative Joint Venture

- **Shared Mission to Serve Patients with Emergency Behavioral Health Needs**
- **Shared Responsibility**
 - County statutorily responsible for Chapter 51
 - Health systems serving 3x as many patients with primary behavioral health diagnosis, variation in coverage and capabilities
- **Coordinating Infrastructure – MHCP**
- **Executive Sponsorship, Senior Most Level**
- **Enduring, Trusting Relationships – Over 14 years**
- **Ultimately More Cost-Effective**
 - Shortage of psychiatrists and specialty providers
 - Unable to replicate this level of care in all 10 MKE hospital ERs