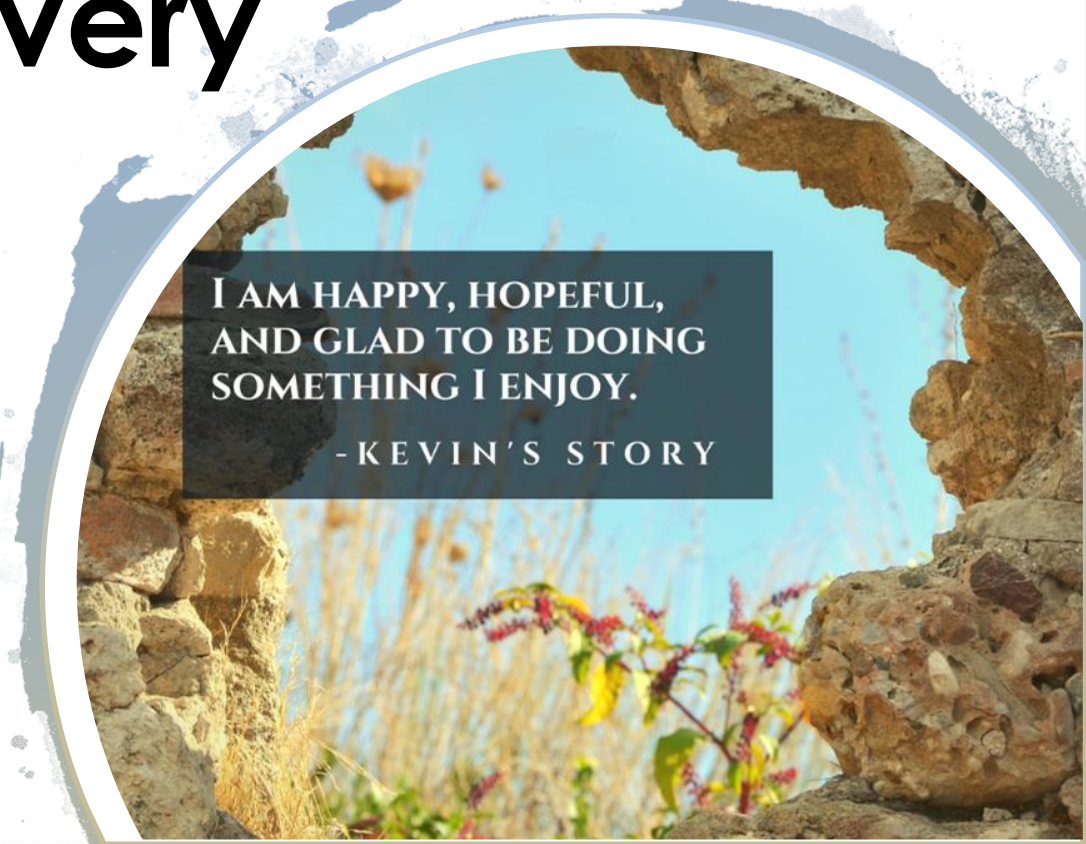
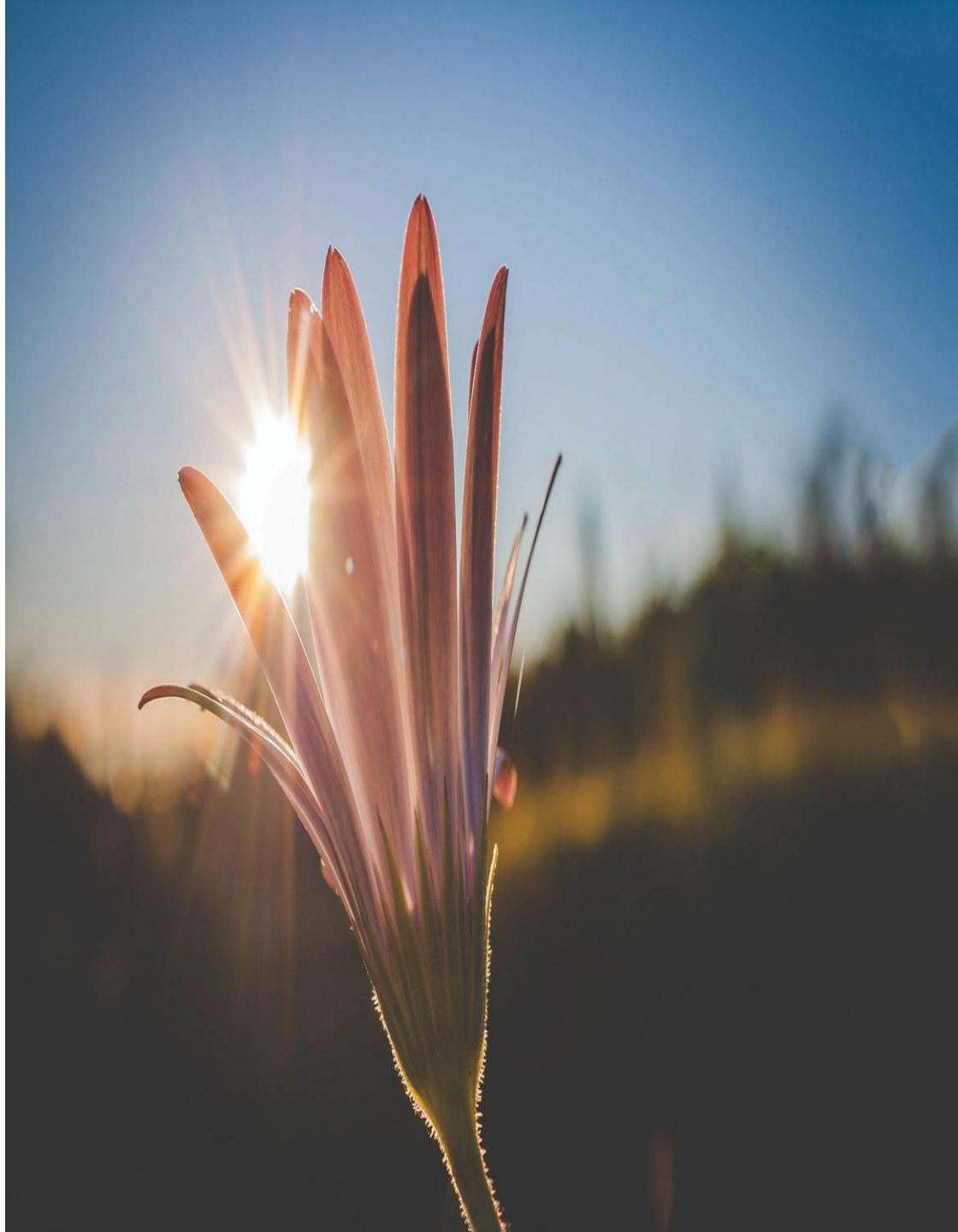




# Work | Recovery



I AM HAPPY, HOPEFUL,  
AND GLAD TO BE DOING  
SOMETHING I ENJOY.  
-KEVIN'S STORY



Employment not only provides a paycheck but allows independence and a sense of self sufficiency.

Employment gives us a purpose, opportunities to learn, and a chance to work with others.

Work contributes to learning and development.

Work provides opportunity to build a social network.

Most importantly, work offers hope, which is vital to our mental health.



Most people with serious mental illness want to work.

People who work tend to enjoy happier and healthier lives than those who are not working.

Our physical and mental health is generally improved through work – we recover from sickness quicker and are at less risk of long-term illness and incapacity.





## Individual Placement and Support (IPS) Principles

The acronym “IPS” indicates the evidence-based approach to Supported Employment services.

The approach was designed for persons with serious mental illness but is applicable to many different populations.

It promotes a “recovery through work” philosophy whereby individuals with severe and persistent mental illness and co-occurring disabilities achieve competitive, integrated employment when assisted with ongoing support services.

IPS is focused on 8 principles that can be applied to achieve better employment outcomes.



## Spirit of IPS

- Zero Exclusion
- Preference are Honored
- Competitive Employment
- Integration of Employment and Mental Health Services
- Benefit Planning
- Employment/Education search occurs rapidly
- Systematic Approach to Business Relations
- Continuous and Individual Supports



**Employment is a key to recovery and wellness.**







**“I have a disability and I don’t let it get in the way of my life. IPS has helped me move on and live”  
Daniel**





[Shawn Shares Impact of Employment](#)





**“I want to rescue animals as my career. I think my job now is definitely helping me reach that goal.” Alice**

# 2019 Milwaukee County IPS Program Success

*Embedded in 8 adult care coordination teams and 3 youth care coordination teams*

*415 total job seekers served in IPS increase of 300 in 2018*

*67 total Young Adults through the youth CCS programs served*

*215 job starts-increase from 107 in 2018*

*42 job seekers successfully transitioned from IPS caseload while working*

*Of 415 consumers, over 100 were served through Supported Education*







**Beth Andrea Lohmann**

[Beth.Lohmann@milwaukeecountywi.gov](mailto:Beth.Lohmann@milwaukeecountywi.gov)

[www.ipsworks.org](http://www.ipsworks.org)