



Safety & Justice Challenge Update

January 2018

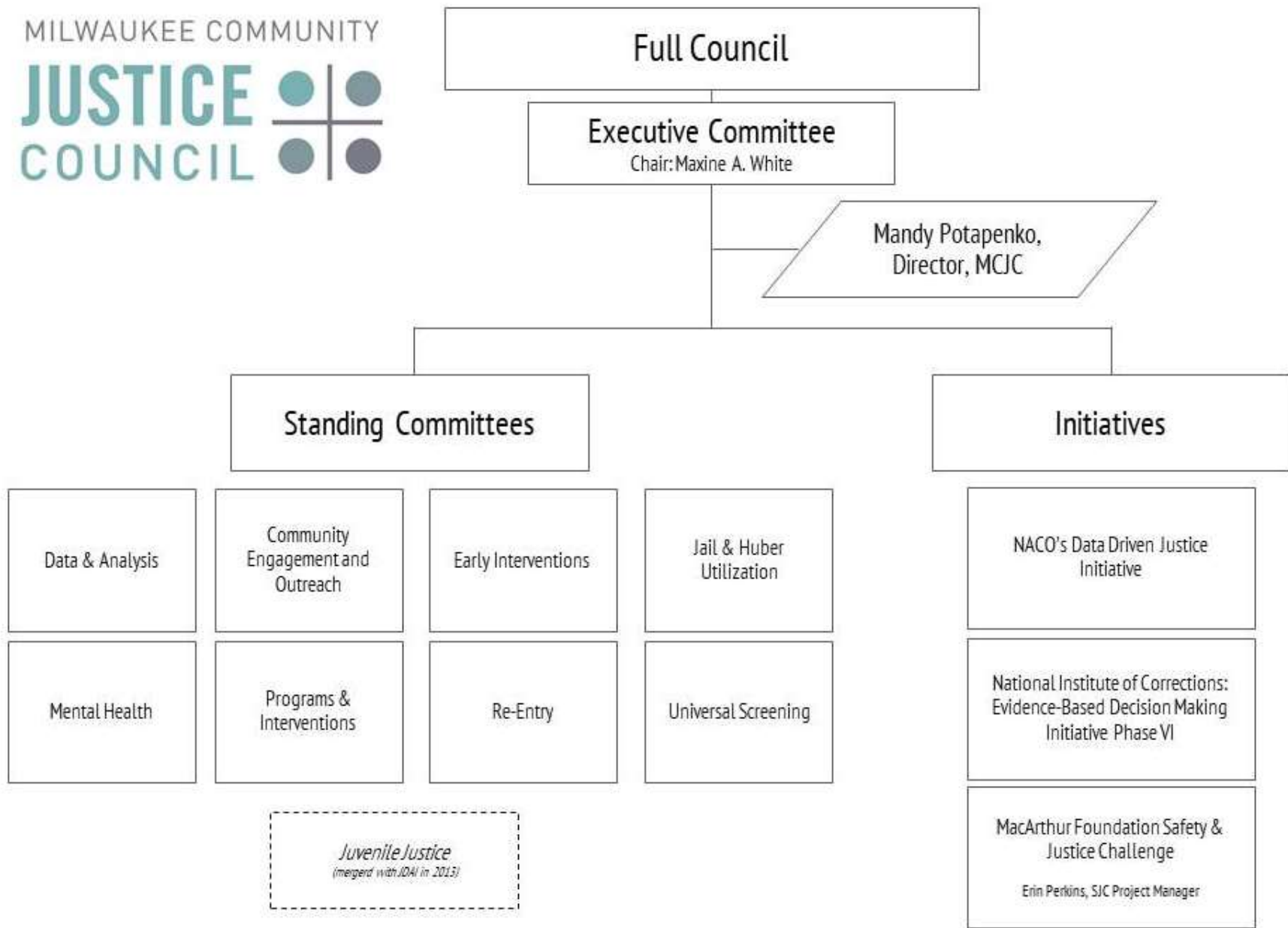


Working collaboratively to ensure a fair, efficient, and effective justice system that enhances public safety and quality of life in our community.

- Long-standing culture of collaboration in Milwaukee
- Ad hoc, collaborative meetings preceded formal council creation
- Established May 17, 2007 by Milwaukee County Board of Supervisors resolution
- Technical assistance began September 2006
- One result from settlement negotiations regarding jail conditions
- Purpose: To serve as a convening body of local Executives to ensure communication, coordination, and collaboration for criminal justice system improvement

MCJC Executive Leadership





Milwaukee County Court System

- Largest of 10 Wisconsin Districts
- Combined State and County Funding
- 6 Divisions: Felony, Misdemeanor, Civil, Family, Probate, and Juvenile
- 47 Judges (249 Statewide)
- 25 Court Commissioners
- 300 Employees

Grants, Initiatives, & Collaborative Partnerships

- Eviction Defense and Mediation Project
- Drug Treatment Courts (Adult and Family)
- Healthy Infant Court
- Laura & John Arnold Foundation Public Safety Assessment
- Milwaukee Justice Center
- Safe Exchange and Visitation Center
- Veterans Treatment Initiative
- **Milwaukee Community Justice Council**
 - National Association of Counties (NACo) Data Driven Initiative
 - National Institute of Corrections Evidence-Based Decision Making Initiative (EBDM)
 - MacArthur Foundation Safety & Justice Challenge

Safety & Justice Challenge Overview

- Safety & Justice Challenge (SJC) Goals
 - Implement reforms to safely reduce overreliance on jails
 - Address racial/ethnic disparities in the justice system
 - Increase community engagement
- Grant provides funding & technical assistance to help jurisdictions achieve the goals

Local Strategies*

- Mental Health Strategies
 - Crisis Mobile Team, CART, and Crisis Resource Centers
 - Post-Booking Stabilization
 - Trauma
- Additional Strategies
 - Book & Refer
 - Expanding Data Capacity / Information Sharing

* Additional strategies could be introduced, pending JFA analysis

CMT, CART, and CRC

Team	Description
Crisis Mobile Team (CMT)	Behavioral health clinicians assist law enforcement (LE) to determine on-scene treatment needs
Crisis Assessment Response Team (CART)	LE officer and behavioral health clinician respond to mental health crisis calls
Crisis Resource Center (CRC)	Locations where LE officers can transport individuals for mental health-related triage services

CMT, CART, and CRC

- Background
 - 35% individuals within Milwaukee County Jail and House of Correction receive psychotropic medication while in custody
 - Competency raised for many in pretrial status
- Under SJC:
 - Expands CART services throughout Milwaukee County
 - Provides training and outreach to law enforcement (LE) about community-based mental health resources
- Benefits
 - Expands available services
 - Directs individuals into community-based services
 - Increases non-custodial options and training for law enforcement

CMT, CART, and CRC

- **Goals:** Reduce number of individuals with mental health conditions entering the justice system; Expand non-custodial options for LE
- **Lead Agencies:** Behavioral Health Division (BHD), DA's Office, MPD

Progress	Next Steps
<ul style="list-style-type: none">• Established baseline measures, based on past CART team performance• 100% MPD patrol officers received Crisis Intervention Training (CIT)• CART Team launched	<ul style="list-style-type: none">• Public messaging• Ongoing law enforcement outreach

Post-Booking Stabilization

- Background
 - Under SJC, created process to divert individuals with mental health conditions from jail into community-based support services
- Benefits
 - Connects individuals to treatment and support
 - Avoids in-custody decompensation and need to restore competency

Post-Booking Stabilization

- **Goal:** Reduce number of individuals with mental health conditions cycling through the justice system

Progress	Lead Agencies
<ul style="list-style-type: none">• Implemented screening tool• Program launched• 58 individuals currently enrolled; 15 discharged• Ongoing capacity building• Evaluating results	<ul style="list-style-type: none">• District Attorney's Office• Public Defender's Office• Milwaukee County Circuit Courts• Milwaukee County Housing• Behavioral Health Division• Milwaukee County Sheriff's Office• JusticePoint

Trauma

- Background
 - High rates of trauma in the justice system
 - Families often reunite in family violence situations
- Under SJC
 - Provide trauma training to system stakeholders
 - Conduct trauma audit of court system
 - Require BHD vendors to provide trauma-informed care
 - Allow diversions and deferred prosecution agreements in family violence cases, requiring evidence-based trauma-informed care
- Benefits
 - Increased recognition and improved response to trauma
 - Interrupt cycle of family violence by connecting families to support

Trauma

- **Goals:** Build trauma-informed system; Expand trauma-informed options in response to domestic violence
- **Lead Agencies:** Milwaukee County Circuit Courts, DA's Office, BHD, CJC

Progress	Next Steps
<ul style="list-style-type: none">• 30 trauma trainers• 375 system stakeholders trained• 83 deferred prosecution agreements (DPAs) entered<ul style="list-style-type: none">• 63 DPAs open, 20 DPAs closed	<ul style="list-style-type: none">• Trauma training for judges & commissioners• Trauma audit• Improve criminal justice complex signage• Expand trauma programming



Mandy Potapenko, Director
Milwaukee Community Justice Council
mpotapenko@milwaukeejc.org

Erin Perkins, SJC Project Manager
Milwaukee Community Justice Council
eperkins@milwaukeejc.org



Supported by the John D. and Catherine T.
MacArthur Foundation