

1 By Supervisor West

File No.

2
3
4 **A RESOLUTION**

5
6 in support of efforts to redesign the Milwaukee County mental health system and create a Mental
7 Health Redesign Task Force to provide the County Board with data-driven implementation
8 planning
9

10 WHEREAS, over the last year-to-two years, abundant discussion has surrounded the
11 topic of mental health service delivery in Milwaukee County; and
12

13 WHEREAS, the community interest, perceived issues, and on-going program
14 development led to the release of a number of studies and suggested plans related to the
15 organization and delivery of mental health services in Milwaukee County; and
16

17 WHEREAS, included in the aforementioned studies and plans are the following:

- 18
- 19 ▪ Sheriff Site Safety Audit, prepared by the Office of the Sheriff, dated June 28,
20 2010;
 - 21
 - 22 ▪ *Transforming the Adult Mental Health Care Delivery System in Milwaukee*
23 *County*, by the Human Services Research Institute (HSRI), released in October
24 2010;
 - 25
 - 26 ▪ Patient Safety Audit, prepared by the Department of Audit following a request
27 from Milwaukee County Board Chairman Holloway, released in October 2010;
 - 28
 - 29 ▪ Mixed Gender Patient Care Units Study, prepared by a workgroup of Behavioral
30 Health Division (BHD) staff at the request of the Chair of the Health and Human
31 Needs Committee, advisory report presented January 26, 2011;
 - 32

33 ; and
34

35 WHEREAS, in addition, the Milwaukee County Board created a Community Advisory
36 Board (File No. 10-213) in May 2010, to convene for one year and provide recommendations
37 regarding safety, linkages with community services/supports, communications with patients and
38 families/patient rights, and patient-centered care; and
39

40 WHEREAS, the Milwaukee County 2011 Adopted Budget contained provisions directing
41 the Department of Health and Human Services to examine possible mental health service-
42 delivery changes, including:

- 43
- 44 ▪ A plan to downsize Hilltop, Milwaukee County's Title XIX certified facility for
45 persons with developmental disabilities;
 - 46

- 47 ▪ A study of crisis capacity in Milwaukee County;
48
49 ▪ Work with the State to create policies to implement 1915i, a continuing Federal
50 revenue source from CMS, in Milwaukee County while alleviating financial risk;
51

52 ; and
53

54 WHEREAS, the Milwaukee County Board also created the New Behavioral Health
55 Facility Study Committee (File No. 10-322), a special committee of five County Supervisors to
56 make recommendations regarding a new behavioral health facility, whose final report is due June
57 1, 2011; and
58

59 WHEREAS, the Milwaukee County Board approved (File No. 11-81/11-49) a plan
60 authored by Chairman Holloway, creating a mental health care pilot project to develop a model
61 for a managed care system with small facilities in the community; and
62

63 WHEREAS, the Community Advisory Board and New Behavioral Health Facility Study
64 Committee are due to issue their final recommendations prior to expiring in June 2011; and
65

66 WHEREAS, the aforementioned plans and proposals create an excellent foundation for a
67 redesign of the mental health system in Milwaukee County; and
68

69 WHEREAS, due to the quantity of inter-related proposals, mental health redesign has
70 become complex, and careful consideration is needed to ensure that redesign implementation is
71 inclusive, comprehensive, and systematic; and
72

73 WHEREAS, the structure depicted in the attached Mental Health Redesign Task Force,
74 with appointed membership from BHD and stakeholder organizations, would collaborate to
75 coordinate the various proposals into implementation recommendations; now, therefore,
76

77 BE IT RESOLVED, that the Milwaukee County Board of Supervisors hereby supports
78 the overall principle of integrating mental health care into the community; and
79

80 BE IT FURTHER RESOLVED, that the Milwaukee County Board directs the Interim
81 Director, Department of Health and Human Services and the Administrator, Behavioral Health
82 Division, to create and make appointments to the attached Mental Health Redesign Task Force
83 from the stakeholder organizations; and
84

85 BE IT FURTHER RESOLVED, that the Mental Health Redesign Task Force shall
86 coordinate recommendations from the various mental health proposals listed below, in order to
87 create a data-driven implementation plan for the mental health redesign in Milwaukee County,
88 which shall be submitted for review and approval by the Milwaukee County Board:

- 89 ▪ Community Advisory Board
90 ▪ New Behavioral Health Facility Study Committee
91 ▪ Chairman Holloway Mental Health Pilot Project
92 ▪ HSRI Report

93
94
95
96
97
98
99

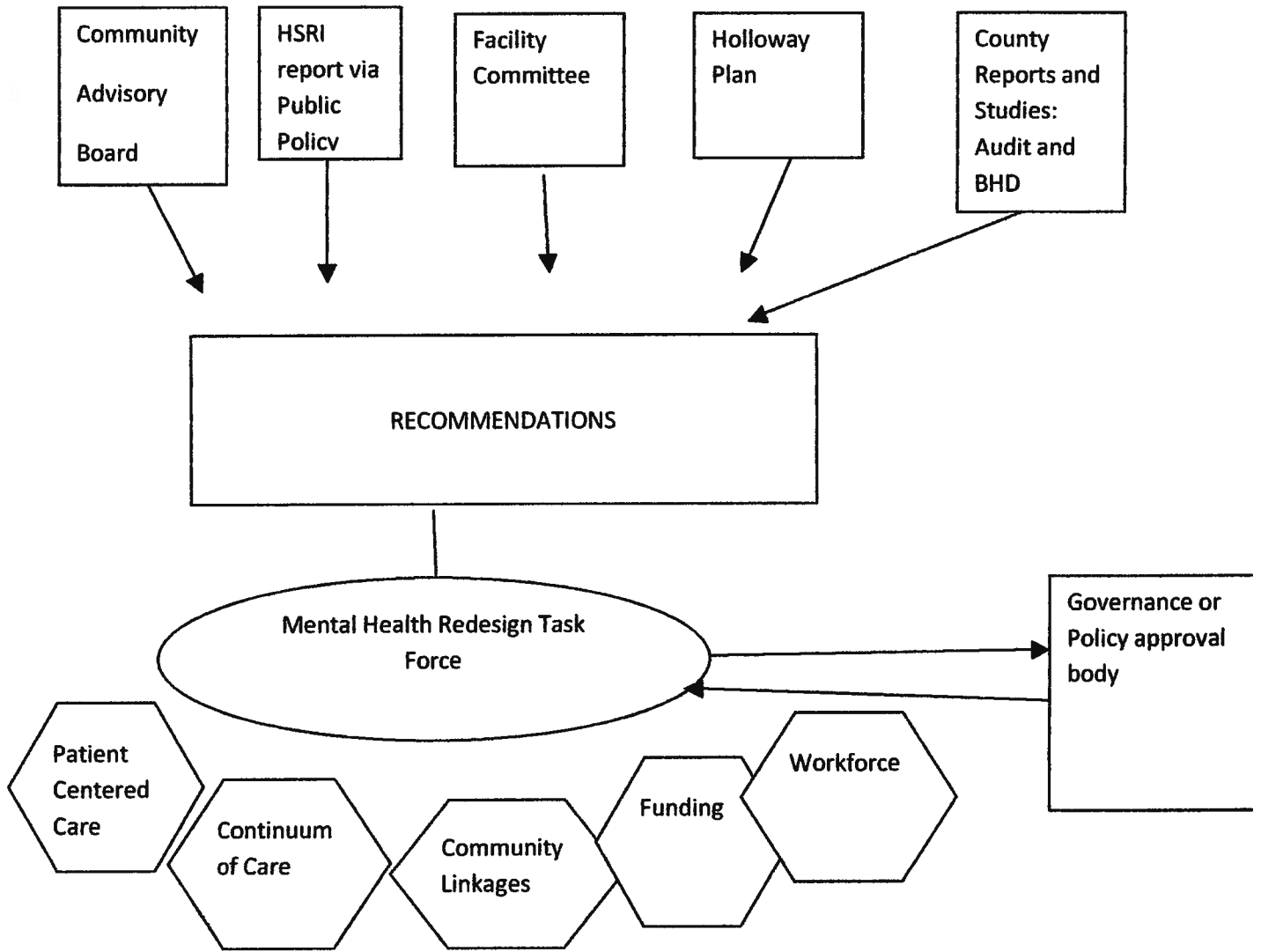
; and

- Department of Audit Patient Safety Audit
- Sheriff Site Safety Report
- Mixed Gender Unit Study
- 2011 Budget Initiatives (Hilltop downsize planning, crisis capacity study, and 1915i)

100
101
102
103
104
105

BE IT FURTHER RESOLVED, prior to issuing its overall implementation plan, the Mental Health Redesign Task Force shall keep the County Board informed of its efforts through the submittal of quarterly reports to the Committee on Health and Human Needs, with the first report, detailing committee membership and anticipated planning structure and timeline, due in the June 2011 cycle.







MILWAUKEE COUNTY FISCAL NOTE FORM

DATE: April 7, 2011

Original Fiscal Note

Substitute Fiscal Note

SUBJECT: A resolution in support of efforts to redesign the Milwaukee County mental health system and create a Mental Health Redesign Task Force to provide the County Board with data-driven implementation planning.

FISCAL EFFECT:

- | | |
|--|--|
| <input checked="" type="checkbox"/> No Direct County Fiscal Impact
<input checked="" type="checkbox"/> Existing Staff Time Required
<input type="checkbox"/> Increase Operating Expenditures
(If checked, check one of two boxes below)
<input type="checkbox"/> Absorbed Within Agency's Budget
<input type="checkbox"/> Not Absorbed Within Agency's Budget
<input type="checkbox"/> Decrease Operating Expenditures
<input type="checkbox"/> Increase Operating Revenues
<input type="checkbox"/> Decrease Operating Revenues | <input type="checkbox"/> Increase Capital Expenditures
<input type="checkbox"/> Decrease Capital Expenditures
<input type="checkbox"/> Increase Capital Revenues
<input type="checkbox"/> Decrease Capital Revenues
<input type="checkbox"/> Use of contingent funds |
|--|--|

Indicate below the dollar change from budget for any submission that is projected to result in increased/decreased expenditures or revenues in the current year.

	Expenditure or Revenue Category	Current Year	Subsequent Year
Operating Budget	Expenditure	0	0
	Revenue	0	0
	Net Cost	0	0
Capital Improvement Budget	Expenditure		
	Revenue		
	Net Cost		



DESCRIPTION OF FISCAL EFFECT

In the space below, you must provide the following information. Attach additional pages if necessary.

- A. Briefly describe the nature of the action that is being requested or proposed, and the new or changed conditions that would occur if the request or proposal were adopted.
- B. State the direct costs, savings or anticipated revenues associated with the requested or proposed action in the current budget year and how those were calculated.¹ If annualized or subsequent year fiscal impacts are substantially different from current year impacts, then those shall be stated as well. In addition, cite any one-time costs associated with the action, the source of any new or additional revenues (e.g. State, Federal, user fee or private donation), the use of contingent funds, and/or the use of budgeted appropriations due to surpluses or change in purpose required to fund the requested action.
- C. Discuss the budgetary impacts associated with the proposed action in the current year. A statement that sufficient funds are budgeted should be justified with information regarding the amount of budgeted appropriations in the relevant account and whether that amount is sufficient to offset the cost of the requested action. If relevant, discussion of budgetary impacts in subsequent years also shall be discussed. Subsequent year fiscal impacts shall be noted for the entire period in which the requested or proposed action would be implemented when it is reasonable to do so (i.e. a five-year lease agreement shall specify the costs/savings for each of the five years in question). Otherwise, impacts associated with the existing and subsequent budget years should be cited.
- D. Describe any assumptions or interpretations that were utilized to provide the information on this form.

This resolution supports efforts to redesign the Milwaukee County mental health system and create a Mental Health Redesign Task Force to provide the County Board with data-driven implementation planning, which will report back to the County Board through the Committee on Health and Human Needs. The Task Force will incorporate the recommendations of the various reports issued in 2010-2011, as well as the final recommendations made by other mental health planning panels, which are set to expire in the coming months.

There is no fiscal impact associated with this resolution. Should the Department of Health and Human Services require any future funding to fulfill the tasks outlined in the resolution, DHHS will have to return to the Board with a funding request at a future date.

Department/Prepared By Jennifer Collins, County Board

Authorized Signature Jennifer Collins

Did DAS-Fiscal Staff Review? Yes No

¹ If it is assumed that there is no fiscal impact associated with the requested action, then an explanatory statement that justifies that conclusion shall be provided. If precise impacts cannot be calculated, then an estimate or range should be provided.

